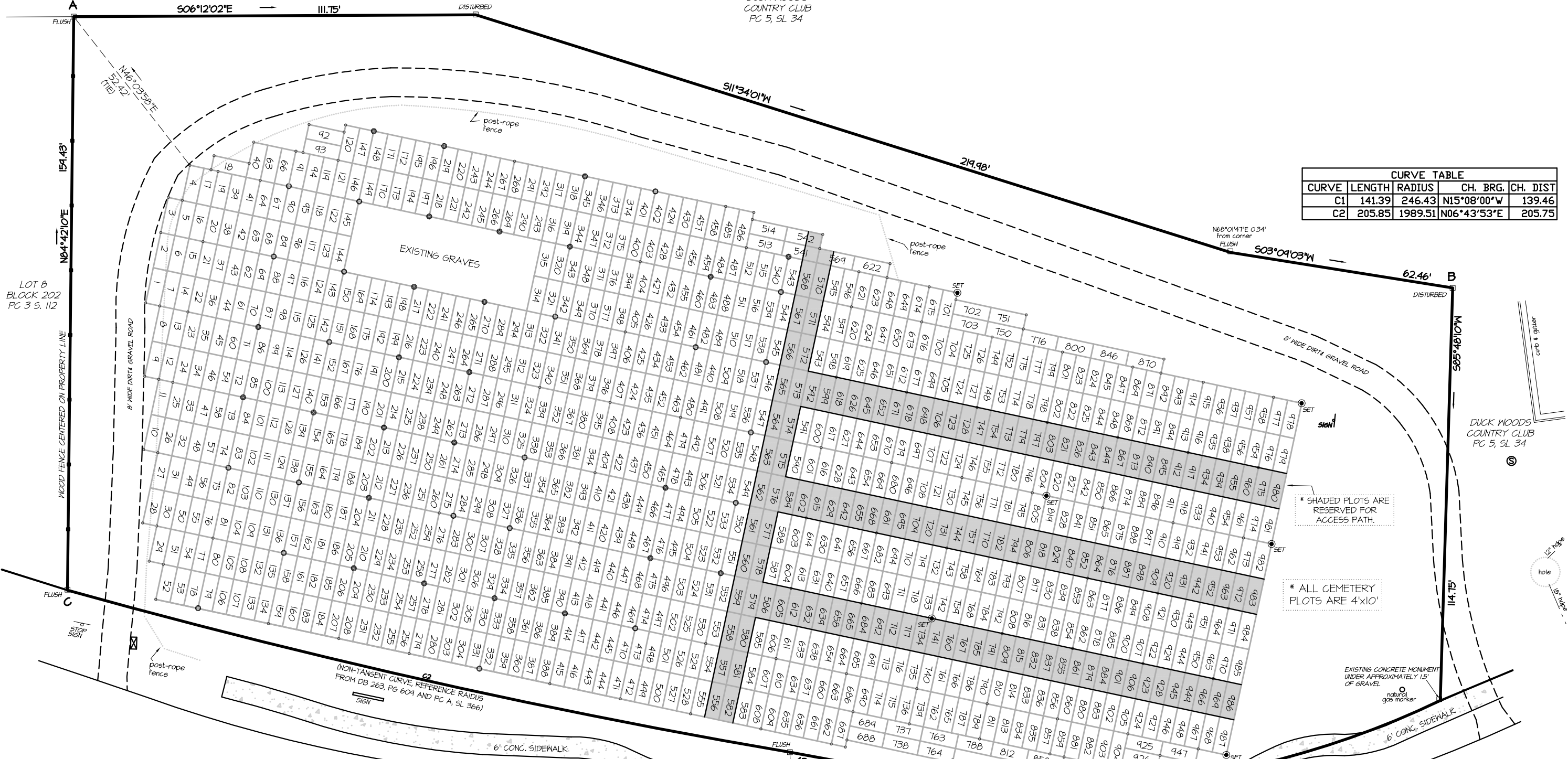


GOLF COURSE
DUCK WOODS
COUNTRY CLUB
PC 5, SL 34

CURVE TABLE				
CURVE	LENGTH	RADIUS	CH. BRG.	CH. DIST
C1	141.39	246.43	N15°08'00"W	139.46
C2	205.85	1989.51	N06°43'53"E	205.75



SHADED PLOTS ARE RESERVED FOR ACCESS PATH.

ALL CEMETERY PLOTS ARE 4'X10'

EXISTING CONCRETE MONUMENT UNDER APPROXIMATELY 1.5' OF GRAVEL

- LEGEND:
- - EXISTING CONCRETE MONUMENT
 - - EXISTING GRAVEYARD MARKER, LOCATED
 - - GRAVEYARD MARKER SHOWN ON PLANS
 - - GRAVEYARD MARKER FOUND, NOT LOCATED
 - - EXISTING IRON ROD
 - - SET IRON ROD
 - ⊗ - FIRE HYDRANT
 - ⊕ - WATER VALVE MARKER
 - ⊖ - WATER METER
 - ⊙ - SEWER MANHOLE

GRAPHIC SCALE



(IN FEET)
1 inch = 20 ft.

- NOTES:
- REFERENCE DB 263, PG 609, PL 3, SL 112, PC 5, SL 34, DB 305, PG 564 AND PC A, SL 366.
 - RECORDED PLAT OF SITE, DB 263, PG 609, DOES NOT CLOSE BY APPROXIMATELY 2'.
 - ON THIS DRAWING BEST PROPERTY LINES MODIFIED TO AGREE WITH FOUND MONUMENTATION.
 - SURVEY DATES 03/24/04, 06/15/11 & 07/11/11.
 - AREA = 63109.3 SF/1.463 AC BY COORDINATE METHOD.
 - NO NCGS MONUMENTATION FOUND WITHIN 2000' OF PARCEL.
 - ROTATION BASED UPON A, B, C.