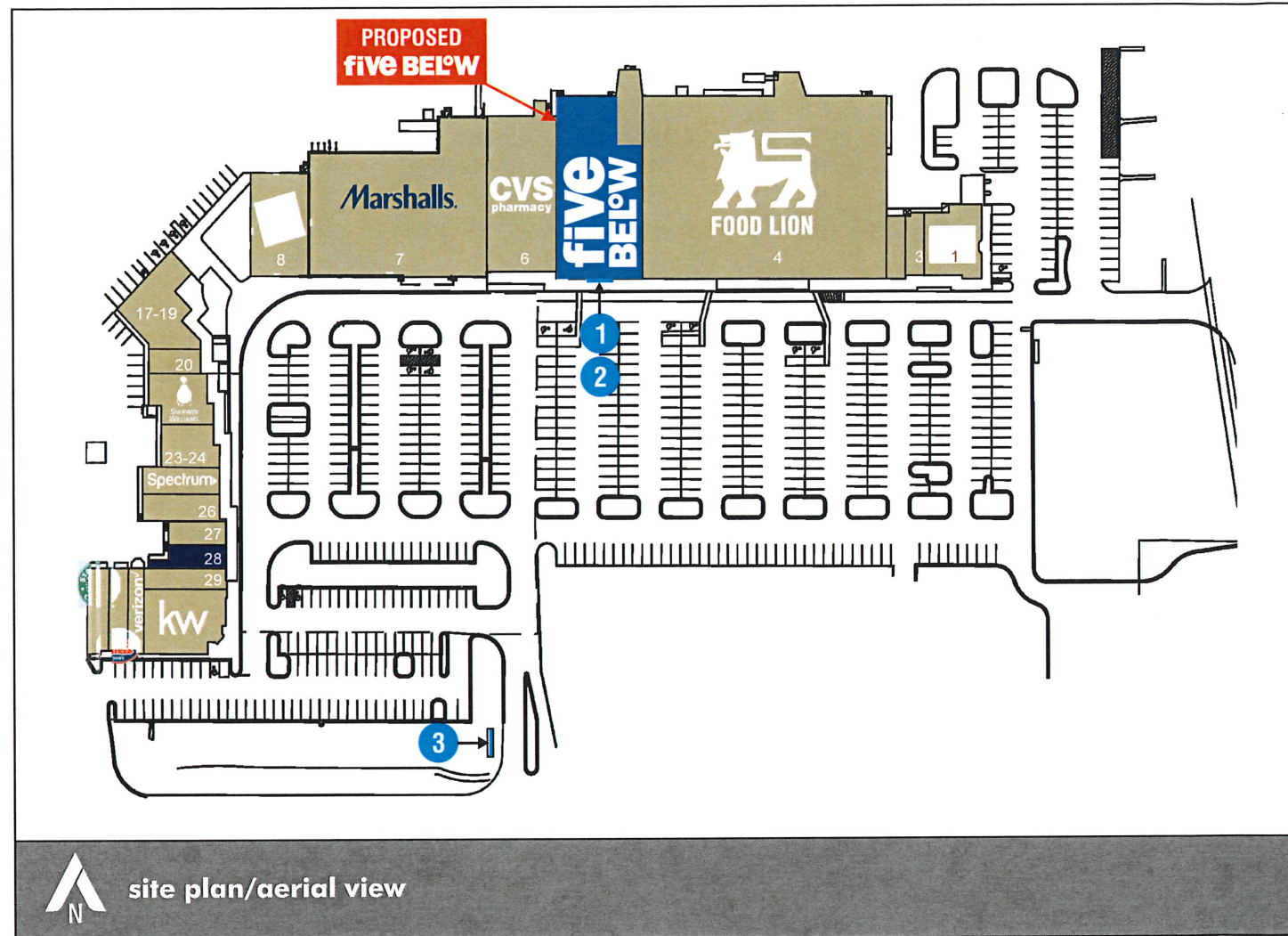


five BELOW

The Marketplace @ Southern Shores - Southern Shores, NC
5500 N Croatan Hwy, Kitty Hawk, NC 27949



scope of work

PROPOSED SIGNS		Sq Ft	Elect. Req'd.	Amps / Voltage	Sign Weight	Special Instructions
FRONT ELEVATION						
1	42" Channel Letters w/ 12.625" Tagline On Blue Bkgd	156.0	Yes	5.5a / 120v	255 lbs	⚡ Variance Required
4&5	Temp Banners	N/A	N/A	N/A	-	⚡ When Required, INSTALLER to provide any cords necessary to install banners. LL to provide Hilti eyebolts for banner installation.
		Allowed SF 58.2	Total SF 156.0			
PEDESTRIAN SIGNS						
2	D/F Under Canopy Sign	5	N/A	N/A	25 lbs	
FREESTANDING SIGNS						
3	Tenant Face	5.5	N/A	N/A	-	
6	Post & Panel Temp Sign	N/A	N/A	N/A	165 lbs	

revisions

REV#	DATE	REVISION NOTES:	BY	SHEET#

symbols key

	120 Volt Junction Box
	Elect Whip: 1/2"Ø x 6'-0" Lg Greenfield
	LED Power Supply
	Blocking Req'd
	Additional Structure Req'd.
	Special Condition Applies
	Access Panel - Field Cut
	Additional Information Req'd.
	Remove
	Remain As-Is
	Relocate

drawing approval

Reviewed By: _____ Date: _____

Approved Approved As Noted Not Approved, Revise As Noted



Cima Network Inc.
121 New Britain Blvd.
Chalfont, PA 18914
office: 267.308.0575
fax: 267.308.0577
www.cimanetwork.com

This is an original, unpublished drawing, created by Cima Network, Inc. It is submitted for your exclusive review, in connection with a project being proposed by Cima Network, Inc. It is not to be shown to anyone outside your organization, nor is it to be used, reproduced, copied or exhibited in any fashion without the expressed consent of Cima Network, Inc.

Client: Five Below
Designer: KG PM: LL

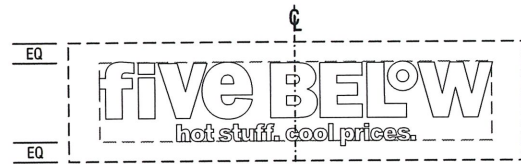
Job#: 22498
Address: 5500 N Croatan Hwy, Kitty Hawk, NC 27949

DATE **3.15.23** REVISION **0**

SHEET **1**

partial elevation

Photo Renderings Are Estimated & May Not Be Accurate. All Proportions, Dimensions And Mounting Details Must Be Verified Via Technical Survey And/Or Architectural Drawings.



CENTER SIGN IN AVAILABLE AREA



42" Channel Letters w/ 12.625" Tagline On Blue Background (156.0 sq. ft.)



2 Under Canopy Sign (5.0 sq. ft.)

Proposed Rendering

Exterior Graphics

58'-2" Storefront Lease Width

FIVE BELOW NOTES

Facade:

- FB to reface parapet and pilasters to FB finishes.
- FB to refurbish existing storefront to like-new condition.
- FB to locate 8' tall storefront doors per tenant's final plans.
- FB to install walkway lighting, 6'-0" min O.C., with additional door light.
- FB to install decorative sconces to match center.
- FB to install HILTI eyebolts in facade for temporary banners, see A40 for loc.
- FB to install curb cut within 30' of storefront entry.
- FB to provide unobstructed permanent access to sign mountable/electrical connection area.
- FB to provide electrical to center of all applicable sign mountable areas.

Signage:

- Primary Sign: 42" internally illuminated channel letters w/ 12.625" tagline
- Temp Post and Panel: Construction sign placed near entrance
- Walkway sign: 5'-0" x 1'-0" UC Sign
- Pylon Panel: Panel below CVS

Finishes by FB:

- Facade (Bump Out): SW 7005 Pure White
- Facade (Inset): SW 6071 Popular Gray
- Metal Roof: SW 7055 Enduring Bronze
- Signage EIFS: 1" Dryvit FIBE-101021S (to match PMS 285 C)
- Cornice EIFS: 1" 310 China White
- Pilasters: SW 7045 Intellectual Gray

full elevation

Photo Renderings Are Estimated & May Not Be Accurate. All Proportions, Dimensions And Mounting Details Must Be Verified Via Technical Survey And/Or Architectural Drawings.



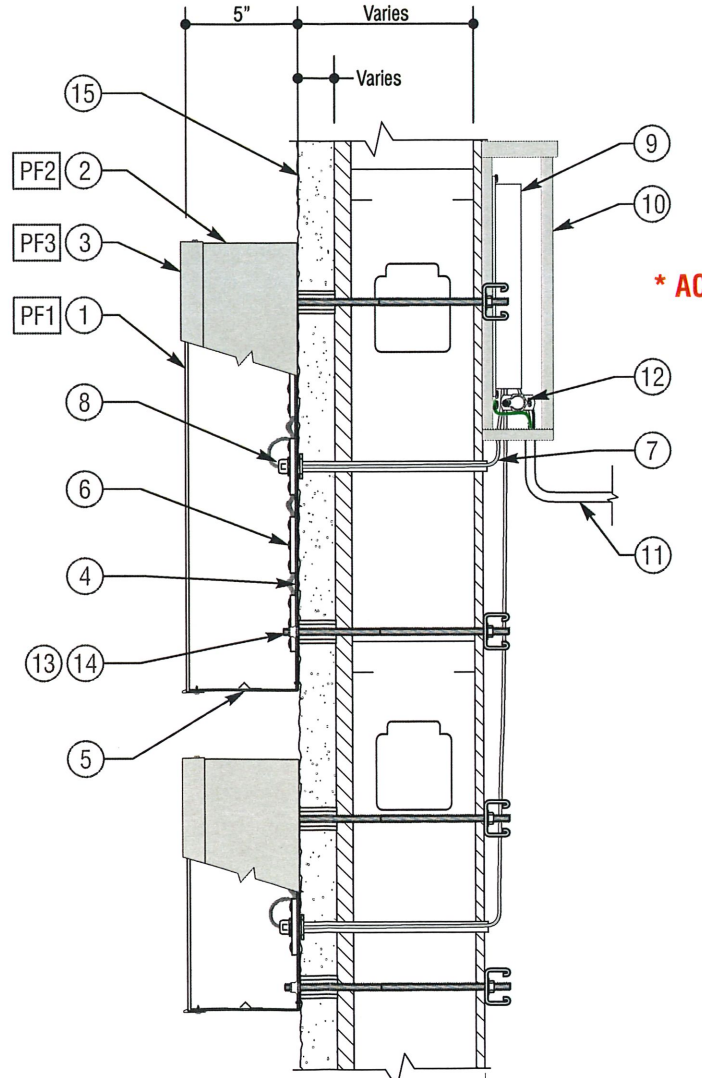
Proposed Rendering

sign 1



1 **1** 42" Channel Letters w/ Tagline - FB-FB42-TAG-IL-LNR-W-RM **122.4 sf**
 Scale: 1/4" = 1' 0"
 (1 Required)

2 Side View
 Scale: 1/4" = 1' 0"



3 EIFS Attachment Detail
 Scale: 1-1/2" = 1' 0"

specifications

Exterior Fabricated Face Lit LED Channel Letters w/ Trimcap Mounted To EIFS Wall System

EST WEIGHT: 255 lbs
 EST ELECT LOAD: (5.5) Amps @120 Volt
 ELECT REQUIREMENTS: (5) 20 Amp/120 Volt Circuits

ULTIMATE WIND SPEED: 146 MPH
 NOMINAL WIND SPEED: 132 MPH
 RISK CATEGORY: II (3 Sec Peak Gust MPH)
 WIND IMPORTANCE FACTOR: I= 1
 WIND EXPOSURE: C

WIND-BORNE DEBRIS REGION

COLORS & FINISHES

Interior Of All Letters To Be Finished White
 PF1. **FACE:** #7328 White
 PF2. **RETURNS:** Pre-finished Silver Metallic
 PF3. **TRIM CAP:** To Match Returns
 PF4. **BACKS:** Pre-finished White

SIGN CONSTRUCTION

- FACES:** .177" Thick Acrylic
- RETURNS:** 040" Aluminum Returns Stapled To Backs
- TRIM CAP:** 1" Wide w/#8 x 1/2" Lg Pan Head Screws Painted To Match. Trim Cap Chem Bonded To Faces.
- BACKS:** 3MM Routed ACM Stapled To Returns. Seal w/ VOC Compliant White Latex Caulk
- DRAIN HOLES:** 1/4"Ø With Light Cover. (2) Per Letter.

ELECTRICAL (SIGN TO BE UL LISTED)

- LEDS:** Principal True White Qwik Mod 2 & 3 Modules
- WIRE:** Secondary Low Voltage Led Wire
- PASS THRU:** Paige Wallbuster Or Approved Equal.
- POWER SUPPLY:** Principal 60 Watt 12VDC Class 2 Power Supply Inside Enclosure.
- ENCLOSURE:** Paige Box Or Approved Equal
- PRIMARY:** 1/2" Conduit To Disconnect Switch Secure To Wall w/Straps By Others
- SERVICE SWITCH:** Located On Side Of Enclosure

INSTALLATION HARDWARE

- Threaded Rod Will Be Provided Standard (1ft Per Mounting Point). Pipe Spacers Provided Standard. All Other Hardware Is to Be Provided By Installer As Required.
- RIV-NUTS:** 1/4-20. Minimum (3) Per Individual Letter
 - HARDWARE:** Minimum 1/4"Ø Non-corrosive Hardware. Minimum (3) Per Individual Letter. Anti-Crush Spacers As Req'd. Cut To Length In Field

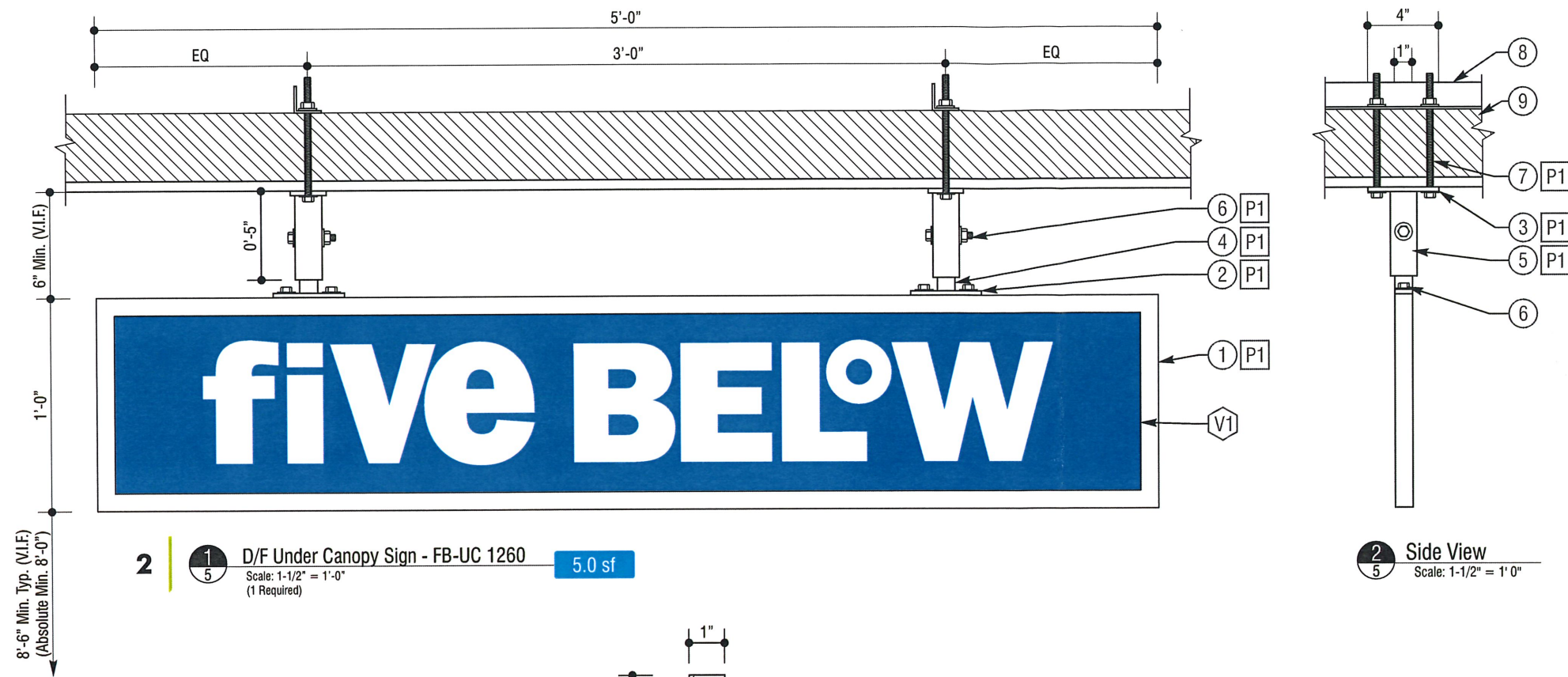
BUILDING & FASCIA CONDITIONS

- WALL SURFACE:** Eifs Over Plywood On Metal Studs.

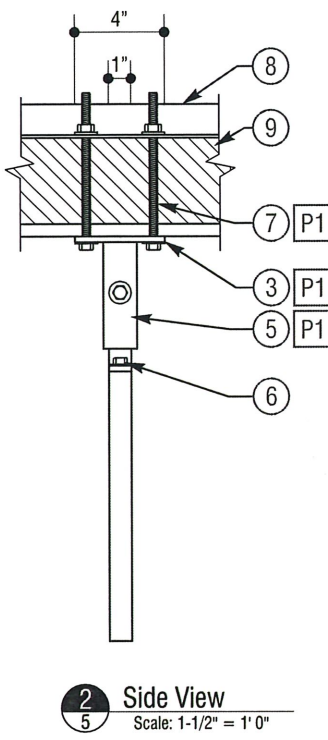
CHANNEL LETTER INSTALLATION NOTES:

- Sufficient Primary Dedicated Circuit Within 5' Of Center Of Sign By Others.
- Final Primary Hook-up By Sign Installer Where Allowed By Local Codes.
- All Visible Wiring & Conduit To Be Run In Straight Lines & 90° Bends.
- 15' WHIPS To Be Used For Sign Wiring.
- Seal All Building Penetrations.
- Mounting Hardware By Sign Installer Unless Otherwise Noted.

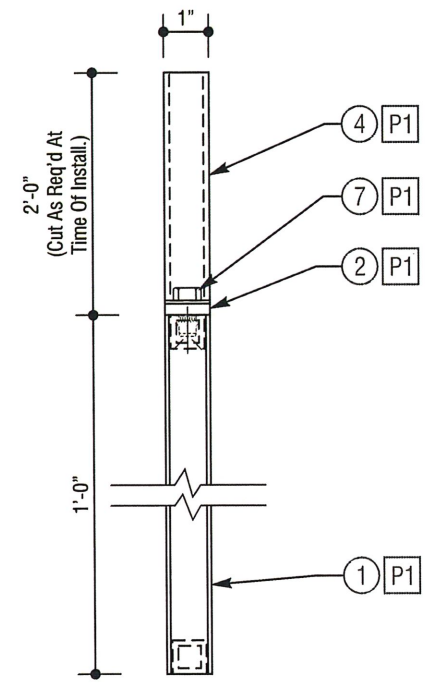
sign 2



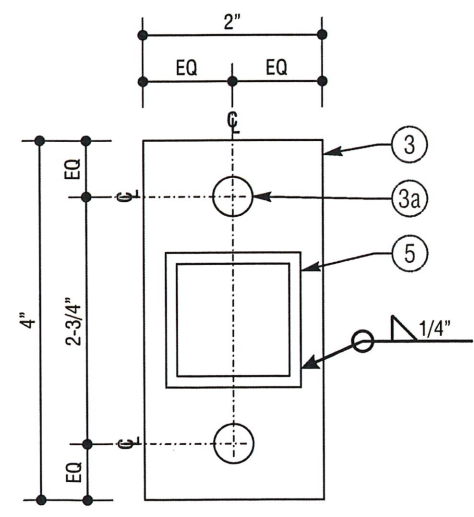
2 **1** D/F Under Canopy Sign - FB-UC 1260 **5.0 sf**
 Scale: 1-1/2" = 1'-0"
 (1 Required)



2 Side View
 Scale: 1-1/2" = 1' 0"



3 Panel Detail - Side View
 Scale: 3" = 1' 0"



4 Mounting Plate Detail
 Scale: Half

specifications

Exterior, D/F Non-Illuminated Under Canopy Sign

EST WEIGHT: 25 lbs
 EST ELECT LOAD: N/A
 ELECT REQUIREMENTS: N/A

ULTIMATE WIND SPEED: 146 MPH
 NOMINAL WIND SPEED: 132 MPH
 RISK CATEGORY: II (3 Sec Peak Gust MPH)
 WIND IMPORTANCE FACTOR: I= 1
 WIND EXPOSURE: C

WIND-BORNE DEBRIS REGION

COLORS & FINISHES

P1. PANEL & MOUNTING BRACKETS: Satin White
 V1. VINYL: 1st Surface 3M 3630-167 Bright Blue

SIGN CONSTRUCTION

1. PANEL: Fabricated Aluminum Painted P1. Faces To Be .090" Aluminum VHB Taped To 3/4" x 3/4" x 1/2" Aluminum Tube Frame. 1/4"Ø Riv Nuts In Top Of Tube Frame For Mounting
2. PLATE: 1/4" X 1" X 4" Aluminum Flat Bar Painted P1
3. PLATE: 1/4" X 2" X 4" Aluminum Flat Bar Painted P1
- 3a. HOLES: 7/16"Ø For 3/8"Ø Hardware
4. TUBE: 1/8" x 1" x 1" x 24" Aluminum Painted P1
5. TUBE: 1/8" x 1-1/2" x 1-1/2" x 4-3/4" Long Aluminum Painted P1
6. HARDWARE: 1/4"Ø Painted P1

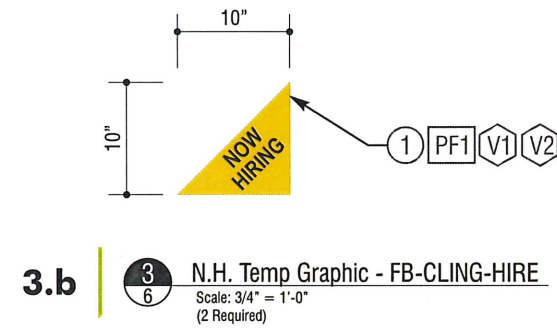
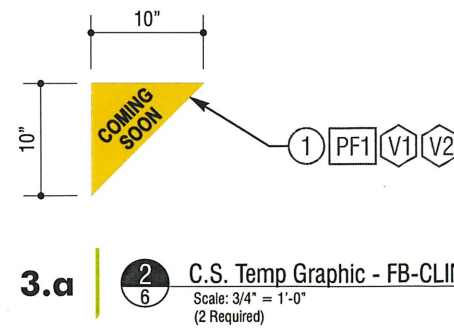
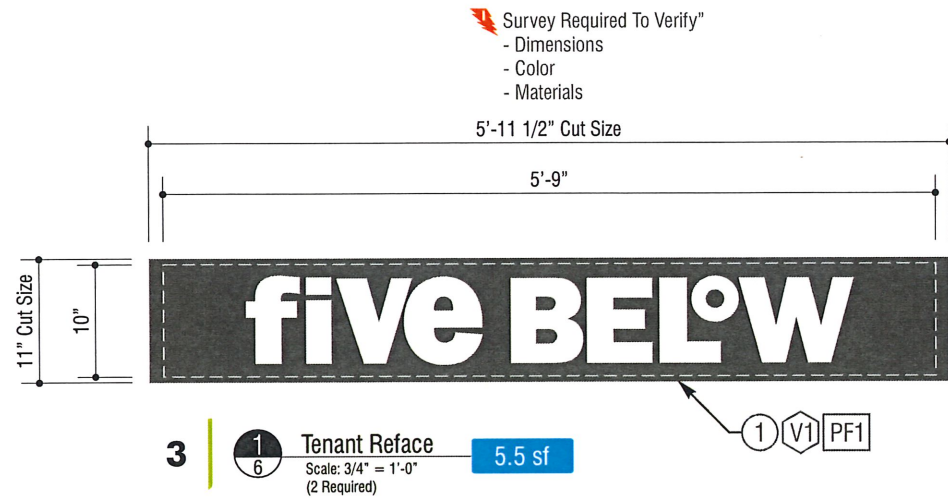
INSTALLATION HARDWARE

7. HARDWARE: 3/8"Ø Non-corrosive Hardware Painted P1. (2) Per Plate
8. SLEEPER: 1/8" X 1-1/2" X 1-1/2" Angle Spanning Minimum (2) Structural Members

BUILDING & FASCIA CONDITIONS

9. SOFFIT: TBD

sign 3



reface specifications

Replacement Faces For Tenant Cabinet

COLORS & FINISHES
PF1. FACE: White Translucent 7328
V1. VINYL: TBD

REFACE CONSTRUCTION
1. FACE: 177" Thk SG05 Modified Acrylic w/1st Surface Vinyl

temp graphic specifications

COLORS & FINISHES
PF1. FILM: Matte White
V1. VINYL: 3630-22 Black
V2. VINYL: 3630-15 Yellow

TEMP GRAPHIC CONSTRUCTION
1. REMOVABLE FILM: GF Concept 6 Mil. 223 Semi-Rigid Calendared Removable Vinyl W/ V1 & V2 Applied On Top 1st Surface

INSTALLATION INSTRUCTIONS
1. Apply To Upper Left Corner Of Face - 2" From Edge Of Face In Each Direction
2. Apply To Face Before Shipping



Proposed Rendering



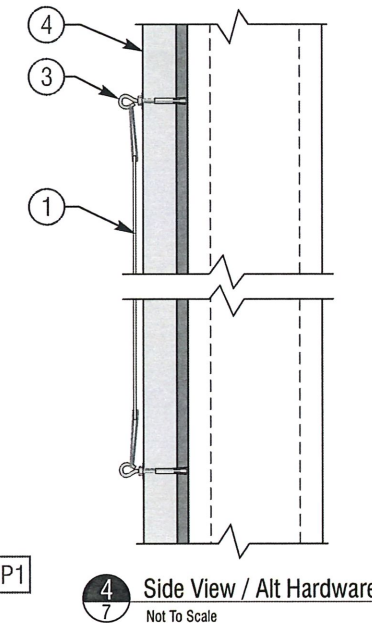
4 **1** Coming Soon Banner - FB-BNR315-CS
Scale: 3/8" = 1'-0"
(1 Required)



5.a **2** Grand Opening Banner - Side A - FB-BNR420-DF-GONO
Scale: 3/8" = 1'-0"
(1 Required)



5.b **3** Now Open - Side B of Grand Opening Banner - FB-BNR420-DF-GONO
Scale: 3/8" = 1'-0"
(1 Required)



specifications

COLORS & FINISHES

- PF1. BANNER: Matte White
- P1. PRINT: To Match PMS 285 C

BANNER CONSTRUCTION

- BANNER: 15oz Briteline Hemmed & Grommeted
- FONT: "Season Year" & "Month, Day, Year" Franklin Gothic Heavy

INSTALLATION HARDWARE PROVIDED BY LL

- TYPICAL HARDWARE: HILTI Eyebolts, Provided By LL.
- ALTERNATIVE HARDWARE: Cord, Provided By Installer, From Grommets To Fasteners, Provided By LL.

BUILDING & FASCIA CONDITIONS

- WALL SURFACE: Varies / TBD

BANNER INSTALLATION NOTES:

- Attach Banner to HILTI Eyebolts, Provided By LL, Maximum 2'-0" On Center
- When Required, Cord, Provided By Installer, From Grommets To Fasteners, Provided By LL, On Fascia Or Rig With Sandbags Of Roof, Etc, Provided By Installer.
- LL To Provide Special Duration, Size Or Restrictions At Time Of Sign Package Review - Per LL Notes.
- "Coming Soon" Banner To Be Installed Approximately One Month Prior To Installation Of Wall Signs. Replace w/"Grand Opening" Side Of Double Sided Banner Upon Installation Of Wall Signs. Banner Will Be Flipped Over Day Before The Opening To Read "Now Open" And Will Remain Up An Additional 30 Days.
- Patch And Repair Fascia Upon Removal Of Banners
- Seal All Penetrations. (For Eifs, Use Eifs compatible sealant, Dow Corning 790, 791, or 795 At All Penetrations)

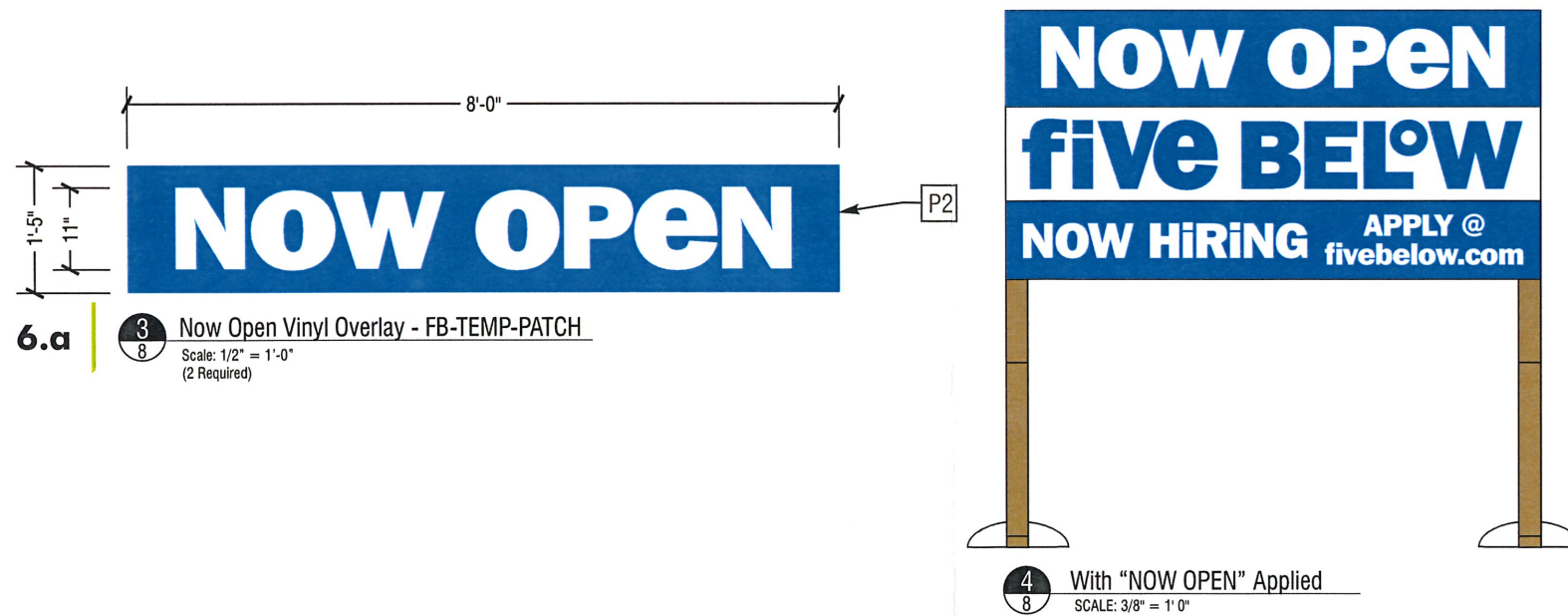


5 Storefront Elevation - Grand Opening Banner
Not To Scale



6 | **1** Construction Sign (On Stands) - FB-TEMP4X8-FEET 32.0 sf
 Scale: 1/2" = 1'-0"
 (1 Required Per Site)

2 Side View
 Scale: 1/2" = 1'-0"



6.a | **3** Now Open Vinyl Overlay - FB-TEMP-PATCH
 Scale: 1/2" = 1'-0"
 (2 Required)

4 With "NOW OPEN" Applied
 SCALE: 3/8" = 1'-0"

specifications

Exterior, Non-Illuminated Post And Panel Temp Sign

EST WEIGHT: 165 lbs

COLORS & FINISHES

PF1. **BANNER:** Matte White
 P1. **PRINT:** To Match PMS 285 C

SIGN CONSTRUCTION

1. **PANEL:** 6mm Thick Coroplast w/1st Surface Direct Print
2. **POSTS:** 4" X 4" Wood Unfinished
3. **HORIZONTALS, KICKERS & BASE:** 2" X 4" Wood Unfinish
4. **HARDWARE:** Bolt All Wood Components Together w/ 3/8" Lag Bolts
5. **HARDWARE:** Screw Coroplast To Wood Structure With Minimum #8 x 1-1/4" Long Non-Corrosive Wood Screws With Fender Washers. Max 24" On Center. Paint To Match Sign Panel
6. **SANDBAGS:** (4) 50lb Capacity Sandbags Per Sign Provided By CIMA

ALTERNATIVE INSTALLATION METHOD - DIRECT BURIAL

1. Option For Direct Burial Into Dirt Without Stands/Kickers. No Concrete Required.