

Sign in - self speaking

Public Hearing  
All Saint Episcopal Church  
Proposed Lighting  
6/5/01

- DAHL Clark #3 GIBBITE ↓
- Meride, Mary Ann ↑
- Secules, Tom ↑
- PAUL HANSON ↑
- Bob Slegel ↑
- Bob Morrison ↑
- DAVE RHODS ↑
- John Lark ↑
- KEV ROLLEY ↑ - NEXT TO LAST
- TESS JUDGE ↑ - LAST
- IRMA LEAKE ↓
- HENRIK NICHOLE ↑
- CLARK ↓
- HEM LICH ↑
- Caroline Mousseau ↑

NOT A CANDIDATE  
USE ISSUE

PARTY NAME  
POLICE CHECK

NON-RESIDENT  
NON-RESIDENT

9 gingers  
2

Wimblech



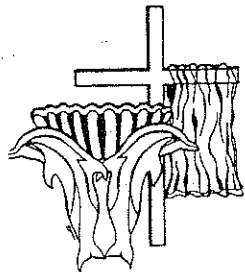
↑ COMPATIBILITY

2 SPEAK AGAINST →  
9 FOR

1/2 BEFORE/AFTER

- APPROVE W/CONDITIONS - ① NO LIGHT ALL NIGHT
- ② PKG NOT LIGHTS OFF AFTER FUNCTIONS

DAVID & IRMA LEAKE ARE FRIENDS OF MINE TOO



# All Saints' Episcopal Church

---

*The Reverend Margaret S. Shepard, Rector*  
40 Pintail Trail • Southern Shores  
North Carolina 27949  
252/261-6674 Phone • 252/261-1754 Fax

April 9, 2001

Planning Board  
Southern Shores, NC

SUBJECT: Parking Lot Lighting - All Saints Episcopal Church

We request to be on the agenda for the April 16, 2001 meeting.

Subsequent to our hearing at your February 19, 2001 meeting, we have discussed the feasibility of lower mounted lights, having smaller wattage, with the application Engineering Department of Rudd Lighting Co., Racine, WI, a manufacturer of the lighting products. Their recommendation is, to use their Model LCF Series Cutoff Floodlight, using a 150 watt HPS lamp and mounted 15 feet above ground. (See attached spec sheet). This light has an optical system to minimize spill light. The fixture would be mounted 20 degrees tilt from horizontal, giving the light coverage shown in spec sheet 150 footcandle plot for 150 watt HPS bulb. Four (4) poles would be required in locations marked "O" on parking lot drawing.

In addition, three (3) LCF series lights, 150 watt HPS, mounted on poles 10 feet above ground will be required for the front parking lot. These also will be mounted at 20 degrees from horizontal. We chose to mount these three (3) lights on the north side of the front parking area in order that the light beam is shining away from neighboring houses. These lights are located with an "S" marking on parking lot drawing.

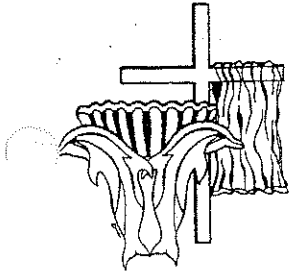
In summary the proposed lighting consists of:

**LOCATION "O"**

- 4 15 ft aluminum poles
- 4 180 degree horizontal tenons
- 8 LCF series 150 watt HPS lamps

**LOCATION "S"**

- 3 10 ft aluminum poles
- 3 LCF series 150 watt HPS lamps



## All Saints' Episcopal Church

---

*The Reverend Margaret S. Shepard, Rector*  
40 Pintail Trail • Southern Shores  
North Carolina 27949  
252/261-6674 Phone • 252/261-1754 Fax

Page 2

As we have stated in two previous meetings, safety of the people using these facilities at night is a major concern. Therefore we ask that you promptly submit our request for council approval.

Sincerely,

Two handwritten signatures in cursive script. The first signature is 'Tess Judge' and the second is 'Ken Rolley'. The signatures are written in black ink.

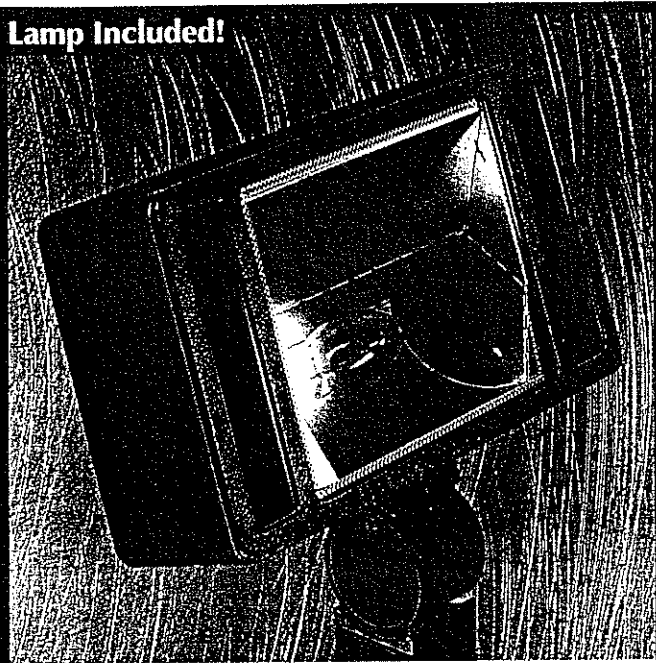
Tess Judge - Co Chair Building Committee  
Ken Rolley - Co Chair Building Committee

enclosure:

parking lot drawing  
spec sheet

# Cutoff Floodlight LCF Series

**Lamp Included!**



Rectangular Series  
Cutoff, Parabolic

R U D L I G H T I N G

## Cutoff Floodlight Order Information

Wattage/ Lamp	Catalog Number	Prepay Price	Mounting Code (Insert Code at * in Catalog #)	Prepay Adder
50W MH	LCF*405-D	\$148	3 = 2" Adjustable Filter	\$18
70W MH	LCF*407-D	\$144	4 = Yoke Mount	\$8
100W MH	LCF*410-D	\$144	8 = Without Mounting (hardware)	\$2
175W MH	LCF*417-M	\$121	(factory-drilled)	
35W HPS	LCF*503-1	\$107		
50W HPS	LCF*505-D	\$121		
70W HPS	LCF*507-M	\$121		
100W HPS	LCF*510-M	\$125		
150W HPS	LCF*515-M	\$127		

Options: (Factory-installed)	Change Suffix To	Add After Suffix	Prepay Adder
120V Reactor ballast (50-150W HPS only)	1		deduct \$10
480V ballast (175W MH & 70-100W HPS only)	5		no adder
Quad-volt ballast (50-100W MH only)	M		\$4
Tri-volt ballast (70-175W MH & 70-150W HPS only) (Canada only)	T		no adder
Single Fuse* (120V, 277V or 347V)	1, 2 or 6	F	\$8
Dual Fuse* (208V, 240V or 480V)	3, 4 or 5	F	\$16
Tamperproof Lens Fasteners	J		\$2

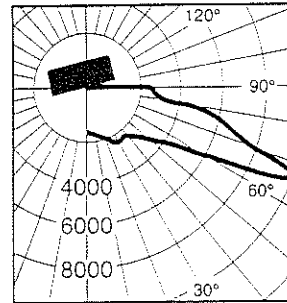
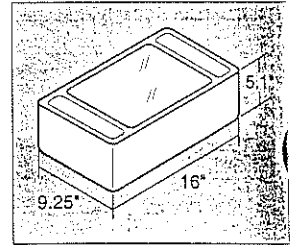
Button Photocell\* (Factory-installed with all mountings other than 2" Adjustable Filter)  
NOTE: n/a on 480V 1, 2, 3, 4 or 6 P \$12

External Photocell\* (Factory-installed) (Page 79)  
For fixtures w/480V 5 P \$23

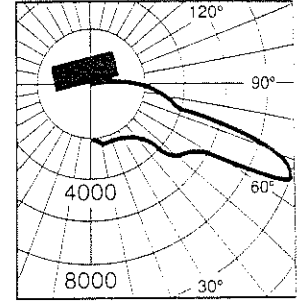
\* Fixtures with factory-installed photocell and/or fuse supplied with single voltage ballast.

Accessories: (field-installed) (Page 79)	Catalog #	Prepay Price
Wire Guard	FWG-I	\$10
Polycarbonate Vandal Shield (n/a if fixture is used in an upright position)	LS-L	\$12
Tamperproof Screwdriver	TPS-1	\$12
Button Photocell (Field-installed in fixtures with 2" Adjustable Filter)		
For fixtures w/120V	PC-1	\$8
For fixtures w/208, 240 or 277V	PC-2	\$8
For fixtures w/347V	PC*6	\$8

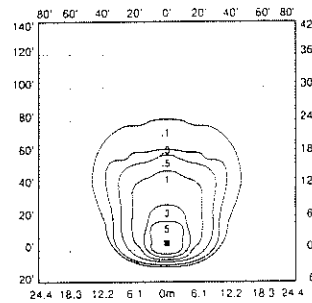
This cutoff luminaire has an optical system specifically designed to assure maximum main beam projection, while minimizing spill light. It is generally positioned with a 20° tilt back from vertical to reduce glare and obtain optimum performance. The optical chamber is sealed to reduce dirt and insect contamination. This fixture is ideal for small parking areas and building mounted security lighting.



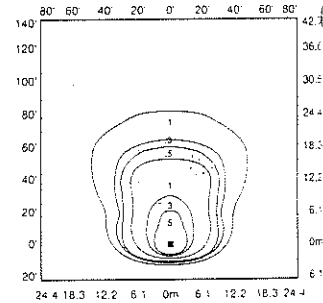
Candiepower Distribution Curve of 175W MH Cutoff Floodlight, 20° tilt above horizontal.



Candiepower Distribution Curve of 150W HPS Cutoff Floodlight, 20° tilt above horizontal.



Isofootcandle plot of one 175W MH Cutoff Floodlight at 15' from reference plane and 20° tilt.

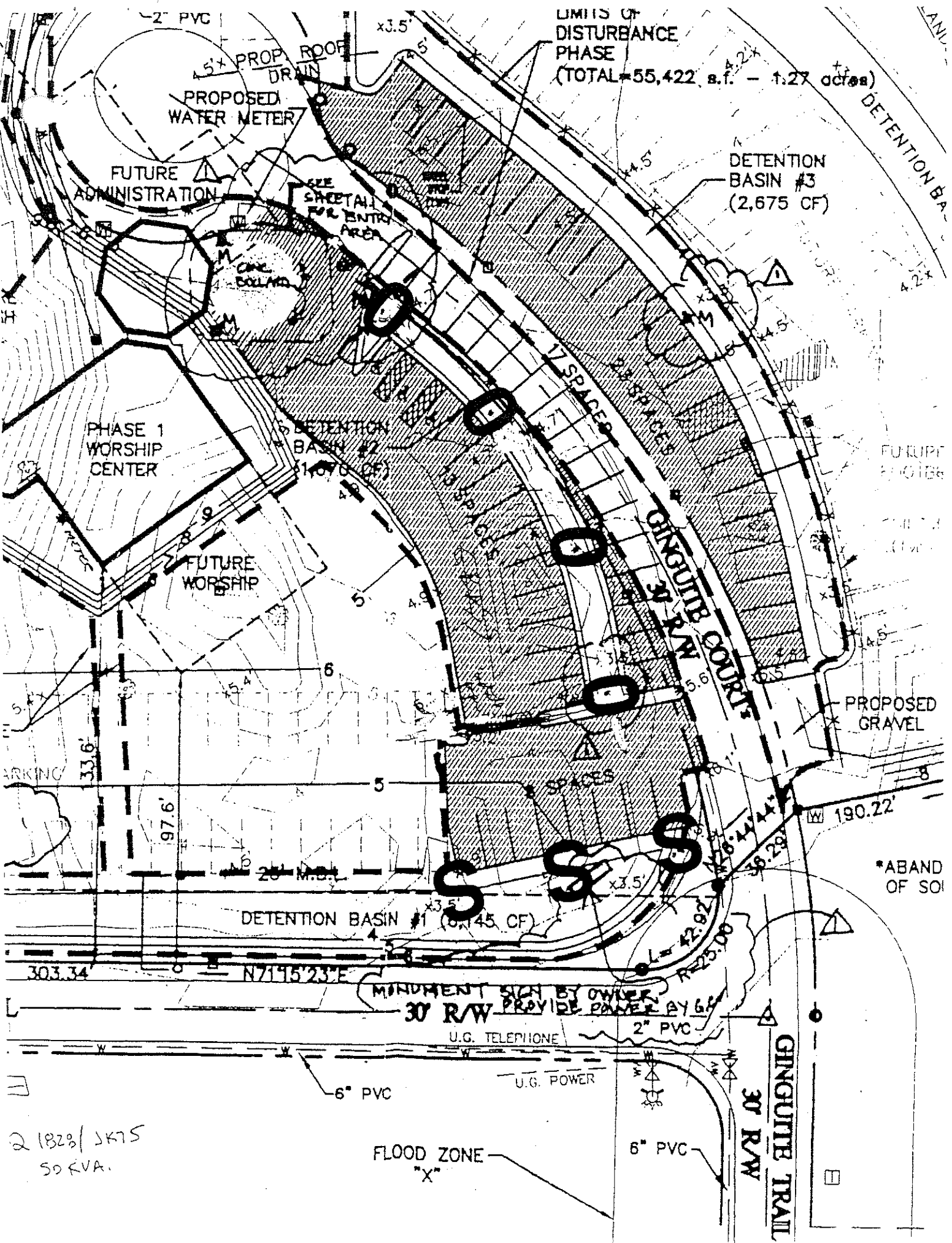


Isofootcandle plot of one 150W HPS Cutoff Floodlight at 15' from reference plane and 20° tilt.

Optical Systems	Page 71
Mountings	Page 72
Catalog Number Logic/Voltage Suffix Key	Page 72
Accessories	Page 79
Mounting Alternatives	Pages 80-81
Mounting Brackets	Pages 82-83
Poles	Pages 84-87

THE BEST CUSTOMER SERVICE IN THE INDUSTRY! Order by phone (800) 236-7000 or by fax (800) 236-7500

LIMITS OF DISTURBANCE PHASE (TOTAL = 55,422 s.f. - 1.27 acres)



2 1828/1675  
50 KVA.

FLOOD ZONE  
"X"

GINGUITE TRAIL  
30' R/W

\*ABAND  
OF SOI

PROPOSED GRAVEL

FUTURE  
BUILDING

DETENTION  
BASIN #3  
(2,675 CF)

DETENTION  
BASIN #2  
(1,070 CF)

DETENTION BASIN #1 (6,145 CF)

PHASE 1  
WORSHIP  
CENTER

FUTURE  
WORSHIP

FUTURE  
ADMINISTRATION

PROPOSED  
WATER METER

PROP. ROOF  
DRAIN

SIZE  
SCHEDULE  
FOR ENTRY  
AREA

CONE  
BOLLARD

PARKING

MINIMUM SIGN BY OWNER  
30' R/W PROVIDE POWER BY 6"

U.G. TELEPHONE

U.G. POWER

2" PVC

6" PVC

6" PVC

2" PVC

x3.5'

x3.5'

x3.5'

x3.5'

ANL

DETENTION BA

7 SPACES

SPACES

GINGUITE COURT

190.22'

303.34' N71°15'23"E

42.92' R225.00

x3.5'

x3.5'

x3.5'

x3.5'

x3.5'

x3.5'

x3.5'

x3.5'

x3.5'

x3.5'

x3.5'

x3.5'

x3.5'

x3.5'

x3.5'

x3.5'

x3.5'

x3.5'

x3.5'

x3.5'

x3.5'

x3.5'

x3.5'

x3.5'

x3.5'

x3.5'

x3.5'

x3.5'

x3.5'

x3.5'

x3.5'

x3.5'

x3.5'

x3.5'

x3.5'

x3.5'

x3.5'

x3.5'

x3.5'

x3.5'

x3.5'

x3.5'

x3.5'

x3.5'

x3.5'

x3.5'

x3.5'

x3.5'

x3.5'

x3.5'

x3.5'

x3.5'

x3.5'

x3.5'

x3.5'

x3.5'

x3.5'

x3.5'

x3.5'

x3.5'

x3.5'

x3.5'

x3.5'

x3.5'

x3.5'

x3.5'

x3.5'

x3.5'

x3.5'

x3.5'

x3.5'

x3.5'

x3.5'

x3.5'

x3.5'

x3.5'

x3.5'

x3.5'

x3.5'

x3.5'

x3.5'

x3.5'

x3.5'

x3.5'

x3.5'

x3.5'

x3.5'

x3.5'

x3.5'

x3.5'

x3.5'

x3.5'

x3.5'

x3.5'

x3.5'

x3.5'

x3.5'

x3.5'

x3.5'

x3.5'

x3.5'

x3.5'

x3.5'

x3.5'

x3.5'

x3.5'

x3.5'

x3.5'

x3.5'

x3.5'

x3.5'

x3.5'

x3.5'

x3.5'

x3.5'

x3.5'

x3.5'

x3.5'

x3.5'

x3.5'

x3.5'

x3.5'

x3.5'

x3.5'

x3.5'

x3.5'

x3.5'

x3.5'

x3.5'

x3.5'

x3.5'

x3.5'

x3.5'

x3.5'

x3.5'

x3.5'

x3.5'

x3.5'

x3.5'

x3.5'

x3.5'

x3.5'

x3.5'

x3.5'

x3.5'

x3.5'

x3.5'

x3.5'

x3.5'

x3.5'

x3.5'

x3.5'

x3.5'

x3.5'

x3.5'

x3.5'

x3.5'

x3.5'

x3.5'

x3.5'

x3.5'

x3.5'

x3.5'

x3.5'

x3.5'

x3.5'

x3.5'

x3.5'

x3.5'

x3.5'

x3.5'

x3.5'

x3.5'

x3.5'

x3.5'

x3.5'

x3.5'

x3.5'

x3.5'

x3.5'

x3.5'

x3.5'

x3.5'

x3.5'

x3.5'

x3.5'

x3.5'

x3.5'

x3.5'

x3.5'

x3.5'

x3.5'

x3.5'

x3.5'

x3.5'

x3.5'

x3.5'

x3.5'

x3.5'

x3.5'

x3.5'

x3.5'

x3.5'

x3.5'

x3.5'

x3.5'

x3.5'

x3.5'

x3.5'

x3.5'

x3.5'

x3.5'

x3.5'

x3.5'

x3.5'

x3.5'

x3.5'

x3.5'

x3.5'

x3.5'

x3.5'

x3.5'

x3.5'

x3.5'

x3.5'

x3.5'

x3.5'

x3.5'

x3.5'

x3.5'

x3.5'

x3.5'

x3.5'

x3.5'

x3.5'

x3.5'

x3.5'

x3.5'

x3.5'

x3.5'

x3.5'

x3.5'

x3.5'

x3.5'

x3.5'

x3.5'

x3.5'

x3.5'

x3.5'

x3.5'

x3.5'

x3.5'

x3.5'

x3.5'

x3.5'

x3.5'

x3.5'

x3.5'

x3.5'

x3.5'

x3.5'

x3.5'

x3.5'

x3.5'

x3.5'

x3.5'

x3.5'

x3.5'

x3.5'

x3.5'

x3.5'

x3.5'

x3.5'

x3.5'

x3.5'

Sign In. of speaking

Public Hearing  
Budget FY 2001-2002  
6/5/01

No one signed up to speak -  
Carrie Snyder  
Town Clerk

2001/2002 Budget Message  
May 25, 2001/Revised June 5, 2001

To: The Town Council And Citizens of Southern Shores

From: Town Manager, Southern Shores

---

This is a time of fiscal uncertainty for many units of government and entities aspiring to such status. At a state level, a serious budget shortfall exists leaving questions as to how it will be balanced and what impact that will have on municipalities. How will Dare County handle the cost of school improvements? Beach nourishment? At what cost to whom? Will incorporation of Duck occur? How will that effect our revenues? What kind of storm season will we have? Will it seriously reduce our revenues from Occupancy and Sales Taxes?

While we do not have all the answers to these questions we do feel reassured knowing that we have built our undesignated fund balance to over a years worth of expenses. We are fiscally very sound and more than ready to play whatever hand the new century deals us financially. This gives us security and flexibility. Even with a vigorous roads program and other necessary spending, our fund balance will stay at about \$2.8 million.

Looking at the proposed budget from a customer service and staffing point of view, we see two areas where change is very much needed to better serve our citizens. We are staffed like a town of 1,200 or 1,400 but the actual year 2000 census shows our year-round residents now total 2,201. This budget increases our police department by one new patrol officer. This will allow us to have two patrol officers on each shift. Today, if an officer makes an arrest and has to go to the Magistrate in Manteo he or she has no fellow officer on duty to relieve him. The same scenario occurs in other instances such as when an officer goes out on the police boat to chase down a jet ski operating without a permit or to monitor boating in the canals. In addition, the increased requirement for more of a beach presence on our ATV adds to the need for an additional officer. Our year-round population has grown and so have police duties. A large number of break-ins this past winter shows how policing is a year-round business. It's time to grow our Police staff by one.

The second area that needs staffing attention is Public Works. We have no staff in that function and, instead, hire contractors. We can save much of that outside expense and improve the quality and quantity of work by hiring our own person to mow rights-of-way, bush hog overgrown areas, scrape/brush streets in some areas, fill potholes, maintain the multi-use path, improve sight lines as well as other functions. In this proposed budget a Maintenance Technician would be hired reporting to the Town Manager and several key pieces of equipment would be leased or purchased for his/her use.

During the Fiscal Year about to close the Town made significant street improvements and repairs totaling some \$300,000. An additional \$250,000 is budgeted for rebuilds and other street repairs in the new budget. Again, our fund balance health allows us to make significant improvements in this key area. An estimated \$380,000 will be appropriated from the fund balance to balance the budget this year.

Other significant planned expenses for FY 01/02 include a Town Hall fix up, building a large steel storage building behind the South Fire Station for equipment storage and purchasing 3 new police cars as well as several less expensive items.

Employee salaries under this budget will grow by a 3.5% COLA in September and a 0-3% Merit raise program later in the year. Medical expense for insurance is rising by some 29%. The Town will continue to pay for employee medical only and increase employee Cafeteria Credits by 8.4% from \$323 to \$350 per month to share some of the added cost for family coverage.

Last year we reduced the tax rate from 22¢ to 20¢ which reduced our citizens' total tax load by nearly \$100,000. This January we eliminated the fee for town parking permits, saving citizens another \$10,000. Now, after a thorough analysis of our revenues and expenses through May 31, 2001 and a review of the estimated status of our Fund Balance, we believe we can lower our taxpayer's tax rate by an additional 2¢ (for another \$100,000 savings). Therefore I recommend an 18¢ tax rate for FY 2001/2002. We continue to be dedicated to low cost government and volunteerism and by far can brag of having the lowest tax rate on the beach!

In summary, we are proposing a balanced \$2.8 million budget that increases budgeted spending by 7.4% over this year, primarily to add two key employees, conduct an extensive roads program and erect a badly needed large storage structure for various Town equipment, all while reducing the tax rate to 18¢. Our proposed budget ordinance is attached

Thomas A. Gjestson  
Town Manager

## Proposed Budget Ordinance FY 2001-2002

**Be It Ordained** by the Town Council of the Town of Southern Shores, North Carolina that the following be the budget for FY 2001-2002:

Section I. Appropriations: The following amounts are appropriated for the operation of the Town government and its activities for the fiscal year beginning July 1, 2001 and ending June 30, 2002:

	<u>General Fund</u>
Administration Department	563,782
Police Department	734,393
Sanitation Department	348,000
Ocean Rescue	115,000
Fire Department	188,900
Street Department	543,500
Inspections Department	186,845
Grounds & Beautification	140,000
Pitts Center	19,650
<b>Total Appropriations:</b>	<b>\$2,840,070</b>

Section II. Estimated Revenues: It is estimated that the following revenues will be available during the fiscal year beginning July 1, 2001 and ending June 30, 2002 to meet the foregoing appropriations:

	<u>General Fund</u>
Property Taxes – Current Year	868,783
Property Taxes - Prior Years	10,000
Vehicle Taxes – Current Year	33,863
Vehicle Taxes – Prior Years	4,000
Penalties and Interest	3,000
• <b>Total Ad Valorem Taxes</b>	<b>919,646</b>
Occupancy Tax	423,000
Local Option Sales Tax	368,000
Land Transfer Tax	180,000
Utilities Franchise Tax	90,000
Other Taxes	25,900
• <b>Total Other Taxes and Licenses</b>	<b>1,086,900</b>
• <b>Fund Balance Appropriation</b>	<b>380,967</b>
• <b>Unrestricted Intergovernmental</b>	<b>15,100</b>
• <b>Restricted Intergovernmental</b>	<b>110,532</b>
• <b>Permits and Fees</b>	<b>149,350</b>
• <b>Investment Earnings</b>	<b>150,000</b>
• <b>Other Revenues</b>	<b>27,575</b>
<b>Total Revenues:</b>	<b>\$2,840,070</b>

The tax rate will be 18 cents on each one hundred dollars (\$100) valuation of taxable property, as listed for taxes as of January 1, 2001, for the purpose of raising the revenue listed as “Property Taxes - Current Year” and “Vehicle Taxes - Current Year”, as set forth in the foregoing estimates of revenue and in order to finance the foregoing appropriations. Such rate is based on an estimated total valuation of property of \$492,507,485 at an estimated rate of collection of 98%, and an estimated motor vehicle valuation of \$21,623,943 at an estimated collection rate of 87%.

Adopted: This the \_\_\_\_ day of \_\_\_\_, 2001

\_\_\_\_\_  
Mayor

\_\_\_\_\_  
Clerk

Sign in. of speaking

Public Hearing  
20 Amendment

RS-10

6/5/01

No one signed up to speak  
Carrie Jordan  
town clerk

The proposed amendment will be included in  
Draft 20 (amended & restated 2001) for  
July 2001 public hearing

Sign In - My Speaking

Public Hearing

20 Amendment

Application Permit for Cond. Use

6/5/01

no one signed up to speak - Carrie Gorecki  
Town Clerk

The proposed amendment will be included  
in draft 20 amended and restated 2001 for  
July 2001 public hearing.

From: "Buccaneer Motel" <buccaner@pinn.net> [Save Address](#) - [Block Sender](#)

To: "Tess Judge" <tessjudge@hotmail.com> [Save Address](#)

Subject: Town Council - Public Hearing

Date: Tue, 5 Jun 2001 18:11:36 -0400

[Reply](#)

[Reply All](#)

[Forward](#)

[Delete](#)

[Previous](#)

[Next](#)

[Close](#)

Tess,  
The following is a letter I would like read at the Council meeting tonight. I have to work and I will not be able to make the meeting. Could you please read and present this letter to the mayor of Southern Shores.

Thanks,

Sandy Briggman

June 5, 2001

Dear Council Members,

My name is Sandy Briggman and I am a member of All Saints' Episcopal church, the church in discussion here tonight. I stand here before you to extend my plea for the approval of parking lot lighting for our facility. I am a member of the Vestry, which is the church council, at All Saints' and I have first hand knowledge as to what it is like to exit our building when it is dark and approach the parking lot to enter my vehicle. Most of our meetings are at night. I can tell you that the feeling I get while trying to approach my vehicle after a meeting, is a very much unsettling and unnerving to me. It is so dark there, that it is actually difficult to even see your car. It is impossible to find the key hole on the door of my vehicle with out feeling for it with my hand. I have an older vehicle so I can't press a button for the door to unlock. No lights go on inside my vehicle either. I usually can't wait to get into my car and get the motor running in order to get some lighting at all.

Not only is it extremely dark in our parking lot but it is just as unsafe. It is unsafe for two reasons. Because of my age, I don't have a real concern that I might loose my footing when walking in the parking lot at night, however, I do fear for others. This truly is an accident waiting to happen. It is so dark that it is impossible to see any part of the ground that you are walking on. Therefore, the potential for tripping, falling, and hurting oneself is extremely high. This high probability can be lessened or alleviated with proper lighting.

The second reason I feel the lack of lighting is unsafe is truly a personal one. I had been taught at a very young age, because of my gender, to constantly be aware of my surroundings when walking alone in a parking lot to my vehicle, and to have my keys ready for the lock, whether it be night or day. I was taught this as a preventative tactic should I need to get into my vehicle quickly. There have been times when I needed to leave the All Saints' building alone at night. It is impossible to have any kind of peripheral vision to be able to be aware of what is around you or to detect any movement around or toward you. Anyone could easily hide and then approach you and you would not have any clue that another person was there. Given that scenario, I am sure a number of things could enter into your mind as to what could happen next in that sort of situation. One time, is not only too much, but inexcusable.

I know I am only one person but I speak for many. Parking lot lights are needed at All Saints' to protect and thereby make for a safer environment for all who attend or visit our church.

Thank you for your time. I trust you will make the right decision.

Sandra D. Briggman

[Reply](#)

[Reply All](#)

[Forward](#)

[Delete](#)

[Previous](#)

[Next](#)

[Close](#)

[Move To](#) (Move to Selected Folder) ▼

To the Southern Shores Town Council

What I would like to talk about is the blatant disregard for our environment and the aesthetics of our community.

Southern Shores is composed mainly of two zones, one is duneland with mainly water oaks and other low growing vegetation. The other is a mature maritime forest.

When I arrived 21+ years ago all the homes in this maritime forest were situated with only those trees removed that ~~to~~ needed to be removed to fit their home in to the lot.

Over the years ~~to~~ there has been a radical change, more so in the last 3 to 4 years or so. Lots are being altered to the detriment of adjoining properties.

These maritime forest lots are being raped of every piece of vegetation, even in some cases trees on the street right of way.

Does it not seem tragic that one would rather completely level a mature parcel than expend minimum effort to preserve the magnificent ages old timber that would adorn and shade their newly built home. ~~xxxxxxx~~ And then finally they would relent and plant one <sup>pathetic</sup> ~~pathetic~~ sapling per front yard that may claim a pitiful 20 ft. lifetime growth expectancy, and usually a tree not indigenous to this area.

Trees buffer air pollution converting carbon dioxide to oxygen, hold down soil and water erosion, shield winter winds, as well as provide sustenance for birds and wildlife.

How can we criticize Brazil for allowing unchecked reduction in their rain forest yet turn a blind eye to virtually the same practice here, albeit on a smaller scale.

If these new arrivals desire a treeless lot, why don't they buy in the dunes.

I brought this concern up at a Council meeting ~~around~~ 15 years ago and a member of the Council thought it was a big joke that someone wanted to save the trees.

I hope the present Council thinks differently and does something to stop or control this expanding denuding of this precious resource, our maritime forest.

Than You

Peter Macfarlane

PETER MACFARLANE

6/5/01